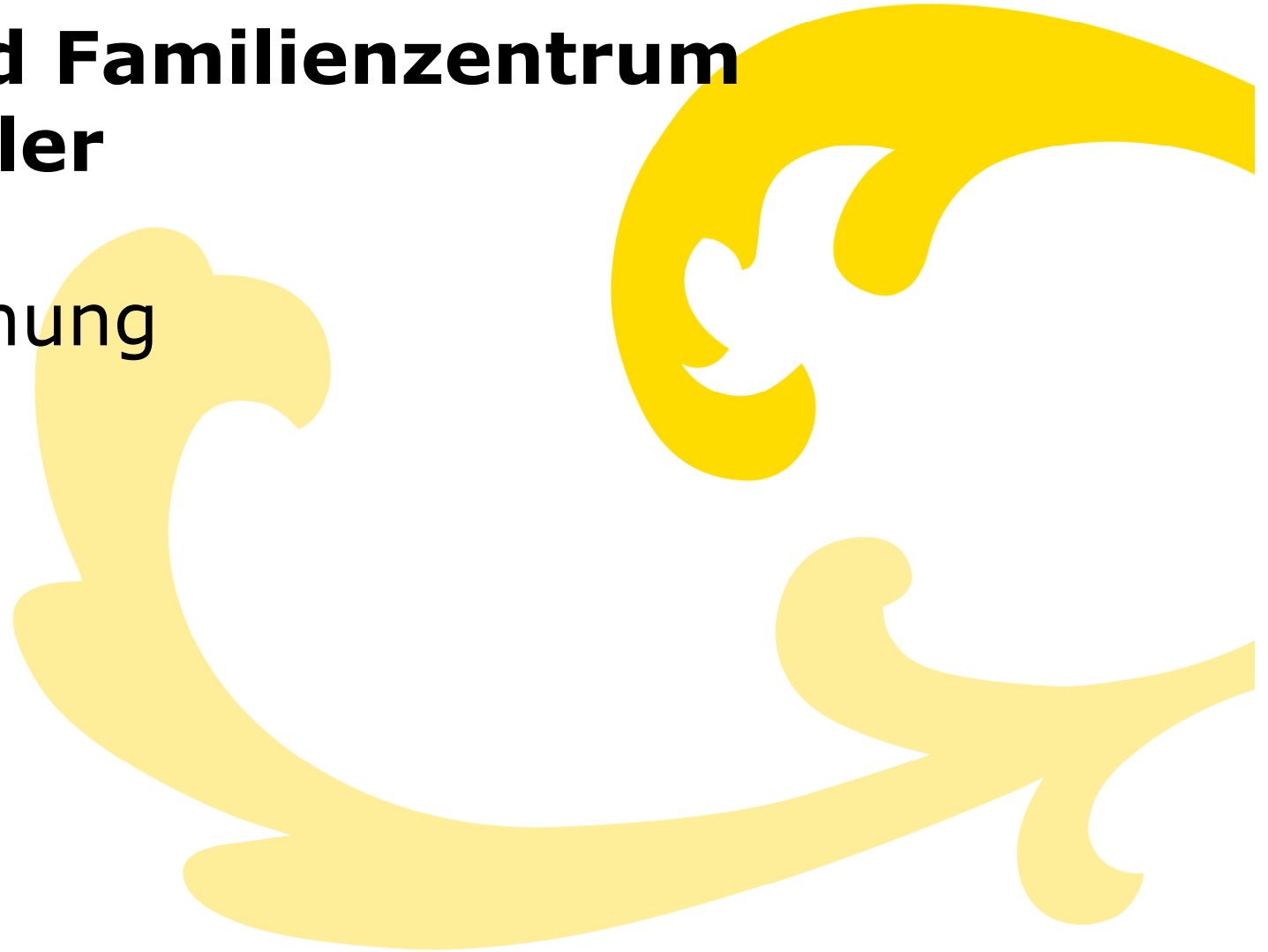




LUDWIGSBURG

Kinder- und Familienzentrum Poppenweiler

Entwurfsplanung





LUDWIGSBURG

Luftbild, Grundstück



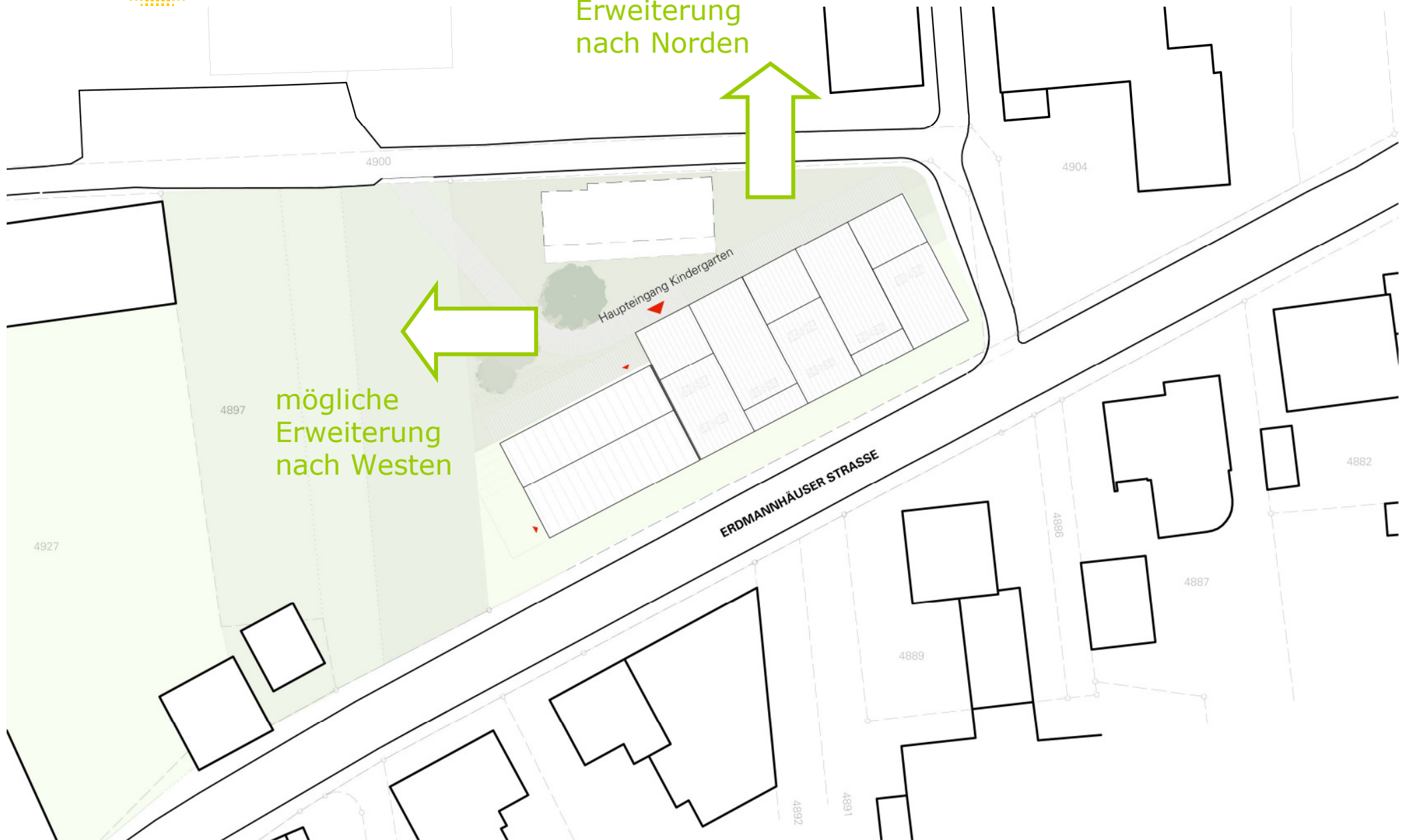
10.10.2012

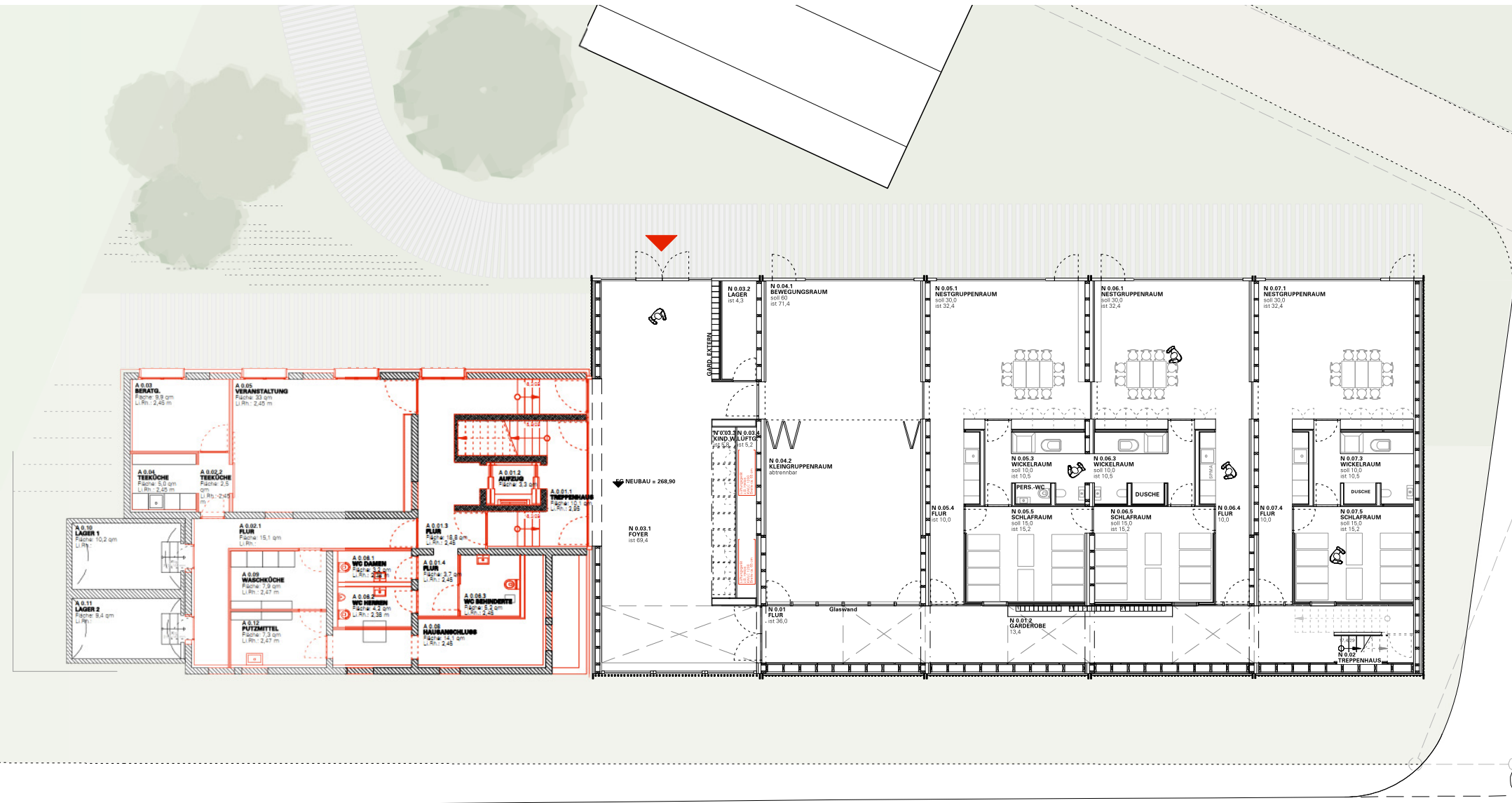
FB Hochbau und Gebäudewirtschaft - Kinder- und Familienzentrum Poppenweiler



LUDWIGSBURG

Lageplan, Freiflächen

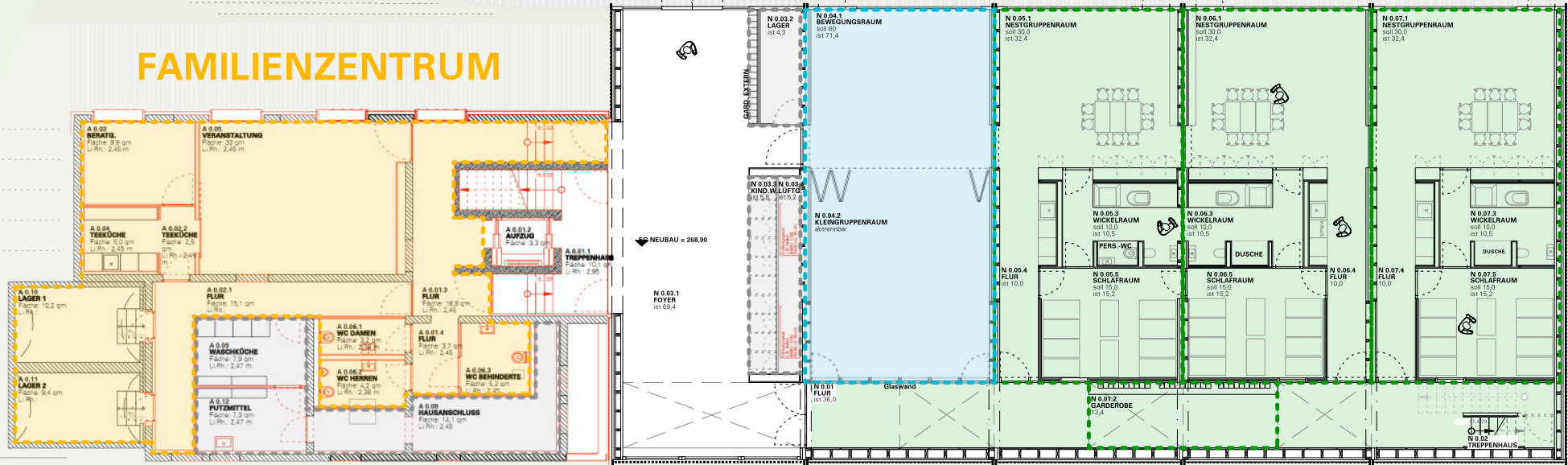




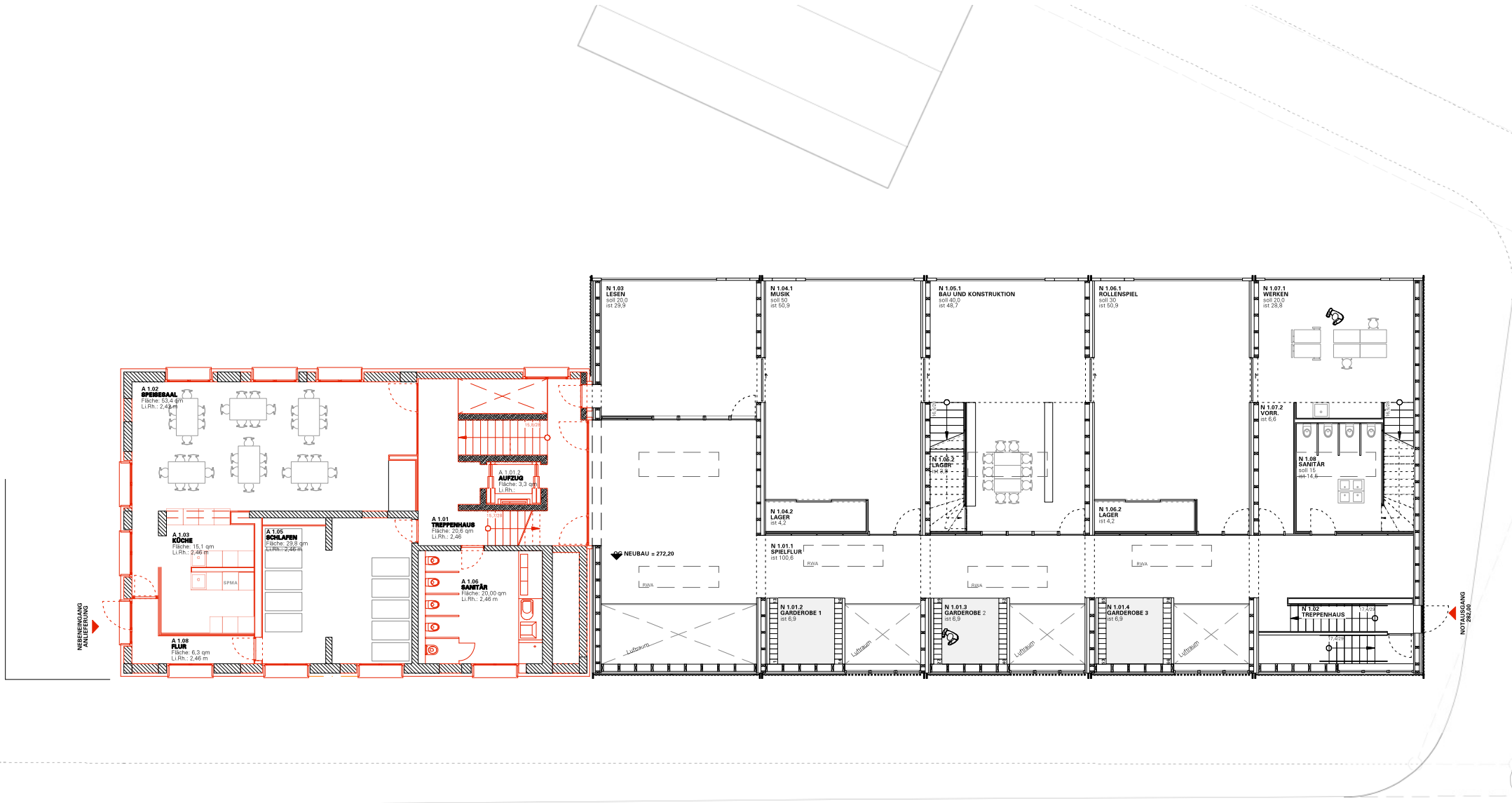
FAMILIENZENTRUM

BEWEGUNGSRAUM NESTGRUPPEN

NEBENRÄUME



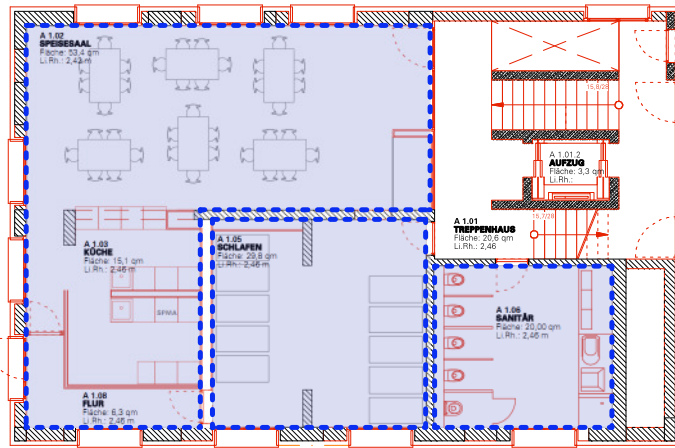
ERDMANNHÄUSER STRASSE



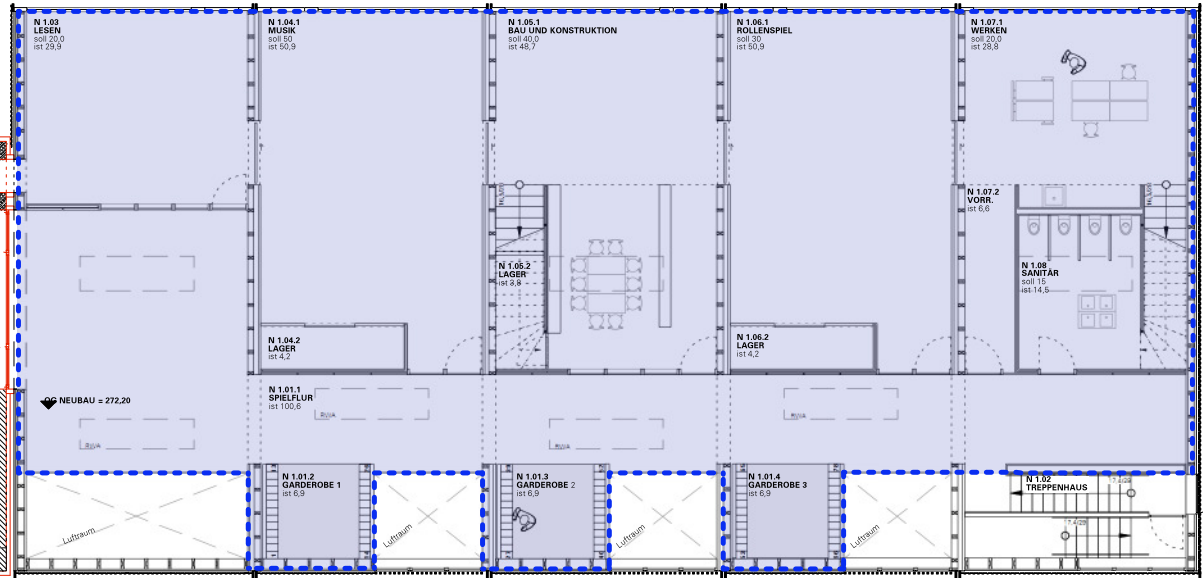


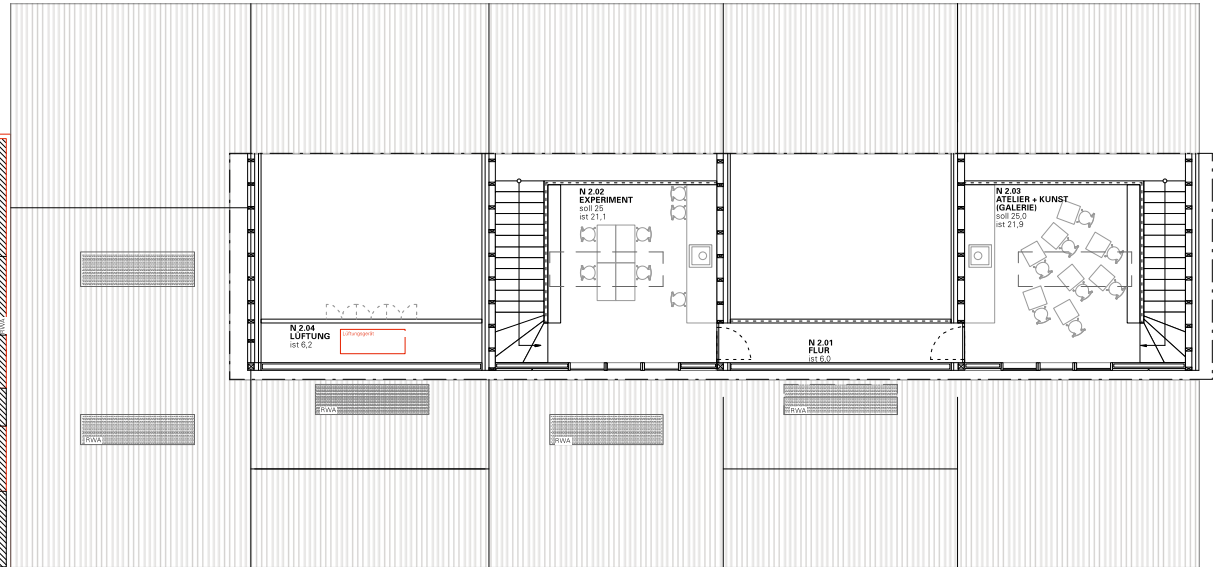
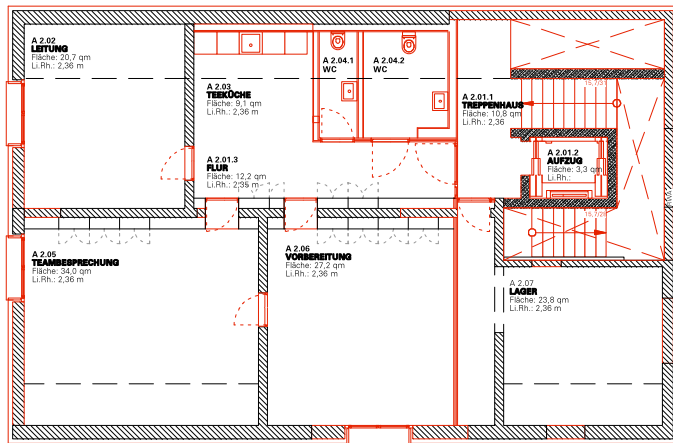
KINDER Ü3

KINDER Ü3 - ESSEN



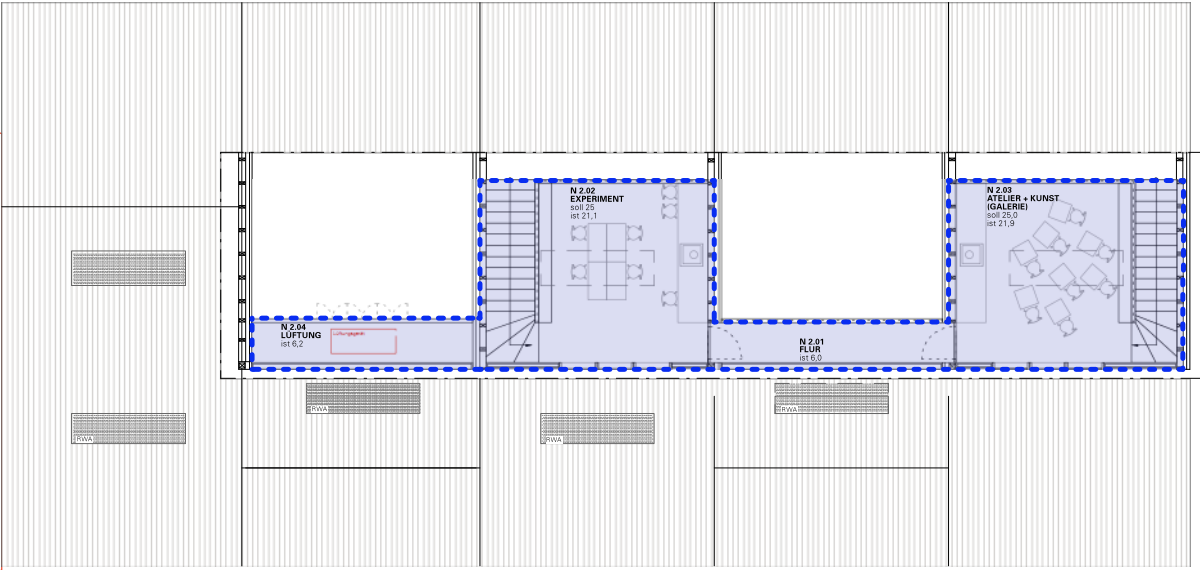
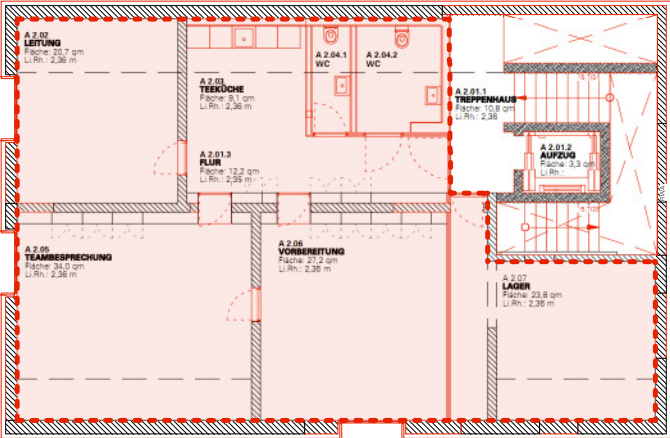
KINDER Ü3 - SCHLAFEN

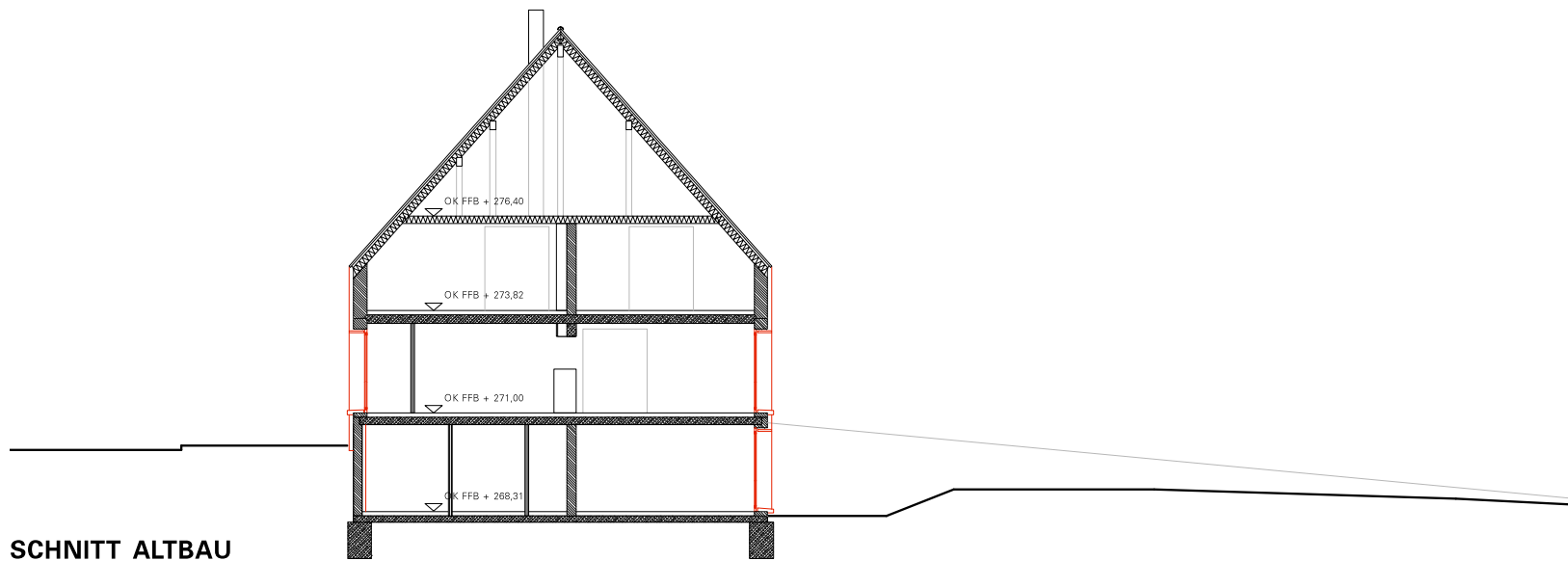




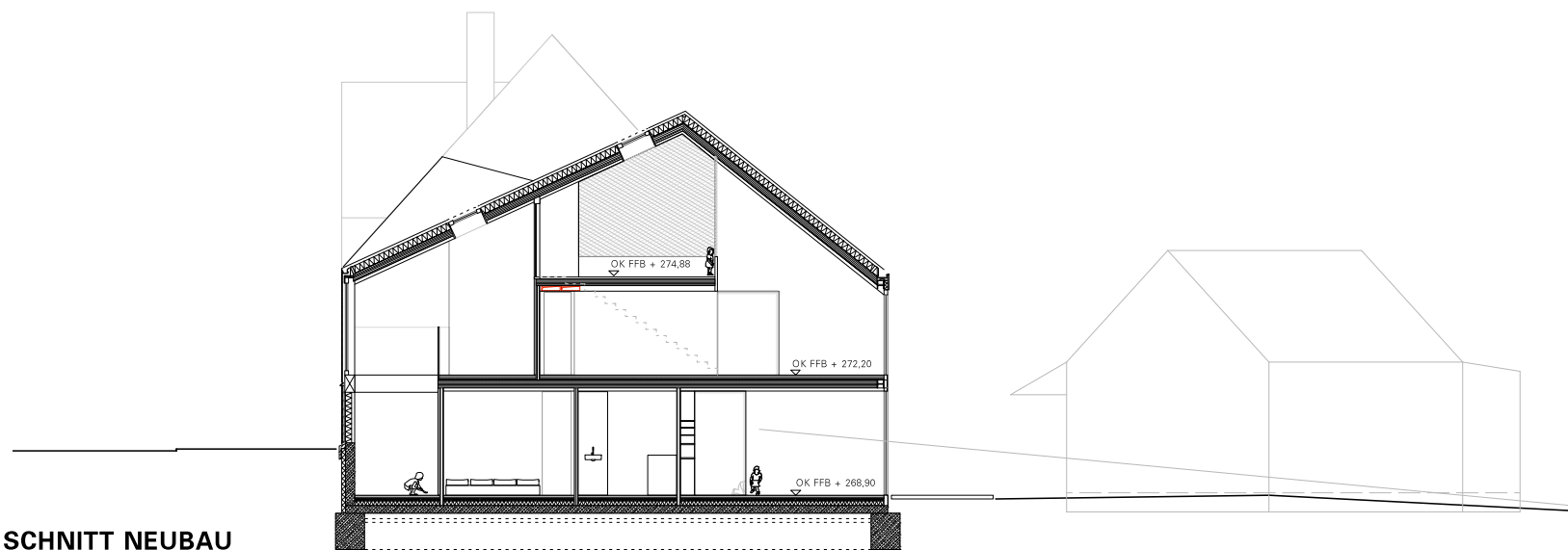
KINDER Ü3

VERWALTUNG

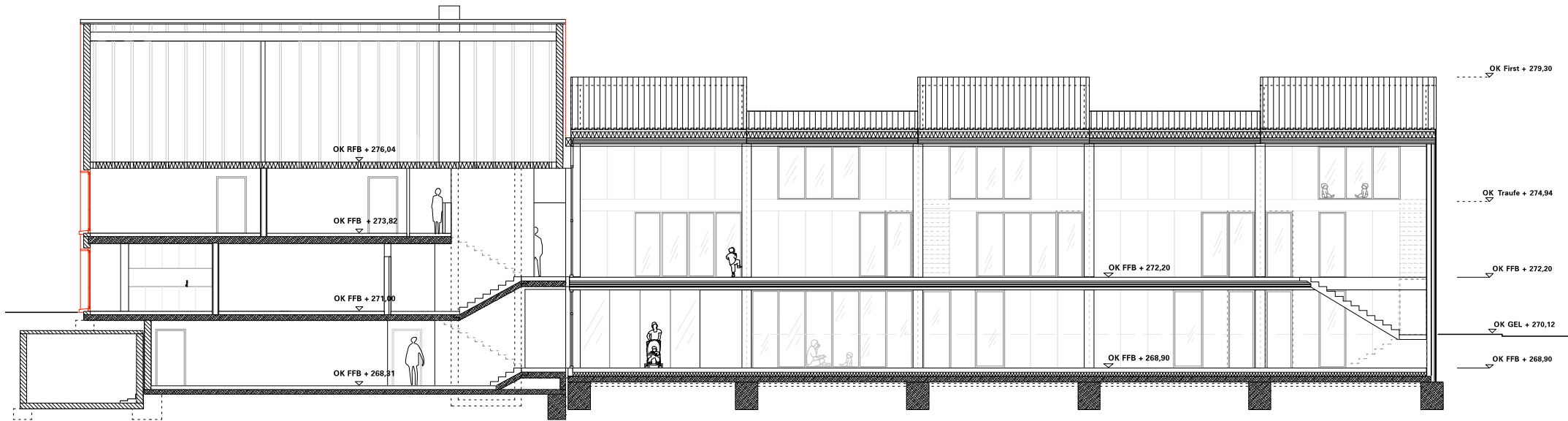




SCHNITT ALTBAU



SCHNITT NEUBAU



SCHNITT 2



