


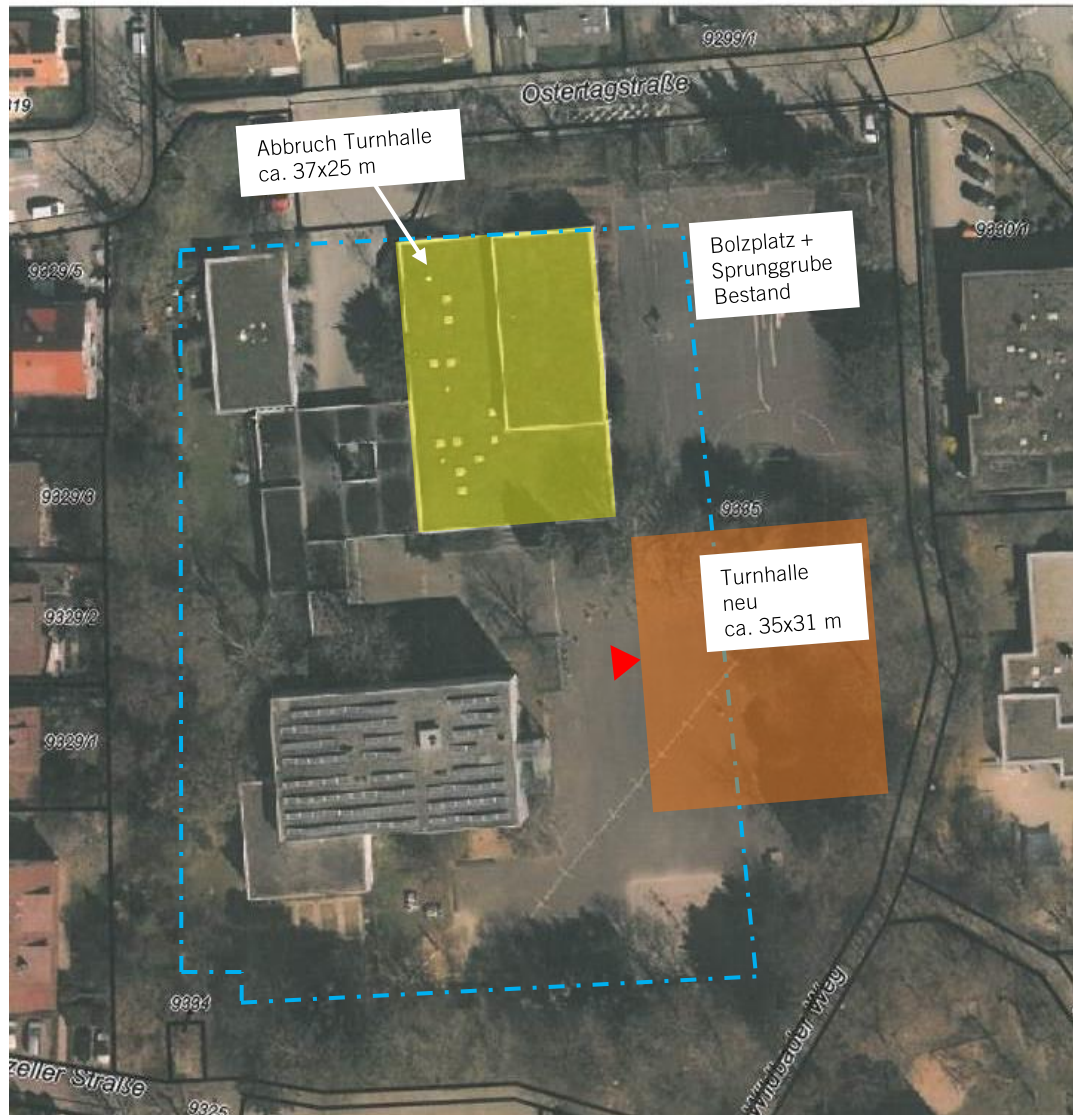




## Variante A




„Turnhalle neu auf  
jetzigem Bolzplatz“

-  Neubau
-  Abbruch
-  Baugrenze



## Variante B


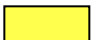

„Turnhalle im  
Schulhofbereich“

-  Neubau
-  Abbruch
-  Baugrenze



Variante C

„Turnhalle neu am Standort alte Halle“

-  Neubau
-  Abbruch
-  Baugrenze